

AVAILABLE OPTIONS FOR ORDERING (PERSONALIZATION) SEAT COVER (WITH SUPPORT)

FOR SUZUKI HAYABUSA GSX1300R 1999-2007 (FIRST GENERATION)

!!! THE PRICES ARE INDICATED FOR A SEAT COVER WITHOUT INSCRIPTIONS!!!

PRICE OF ONE INSCRIPTION / LOGO 20\$ (VARIANTS OF INSCRIPTIONS CAN BE SEE IN THE PIC. 5-27)

ALSO, KEEP IN MIND THAT THERE IS A DISCOUNT IN OUR STORE ALWAYS!!!

AND IN REALITY THE PRICE WILL BE MUCH LOWER!!!

THIS MODEL SEAT COVER HAS THREE VARIANTS (PIC 1):

1 - DOUBLE SUPPORT (FRONT AND REAR) - 249.99\$ (STANDARD PRICE FOR THE KIT) + FREE SHIPPING WORLDWIDE!

2 - FRONT SUPPORT - 234.99\$ (STANDARD PRICE FOR THE KIT) + FREE SHIPPING WORLDWIDE!

3 - REAR SUPPORT - 214.99\$ (STANDARD PRICE FOR THE KIT) + FREE SHIPPING WORLDWIDE!

(35\$ FRONT "PILLOW" / 15\$ REAR "PILLOW")

!!! YOU CAN BUY SEPARATELY, FRONT OR REAR SEAT COVER!!!

- PRICE FOR FRONT SEAT COVER 69.99\$ + FREE SHIPPING WORLDWIDE

-PRICE FOR REAR SEAT COVER WITH DOUBLE SUPPORT 199.99\$ + FREE SHIPPING WORLDWIDE

-PRICE FOR REAR SEAT COVER WITH FRONT SUPPORT 184.99\$ + FREE SHIPPING WORLDWIDE

-PRICE FOR REAR SEAT COVER WITH REAR SUPPORT 164.99\$ + FREE SHIPPING WORLDWIDE

YOU CAN CREATE YOUR OWN CUSTOMIZED SEAT COVER DESIGN: YOU CAN CHOOSE FROM A VARIETY OF INSCRIPTIONS, AND COMBINE THEM AT YOUR OWN DISCRETION!

ALSO YOU CAN ORDER EXCLUSIVE INSERTS (YOUR LOGO, NAME, ETC.), THE PRICE OF ONE INSERT FROM + 5 \$ TO THE STANDARD INSERT PRICE (\$ 25 STANDARD PRICE + FROM \$ 5). EACH VARIANT IS CALCULATED INDIVIDUALLY!!!



PIC1



PIC2

ALSO YOU CAN CHOOSE A COLOR FOR EACH OF THE 42 ELEMENTS!

TO DO THIS, YOU NEED TO WRITE THE NUMBER OF THE ELEMENT AND THE COLOR THAT YOU WANT FOR IT.

AVAILABLE COLORS CAN BE SEEN IN THIS LIST BELOW (IN PICTURES 28-29-30-31-32-33).

IF YOU WANT TO REMOVE SOME ELEMENT (INSCRIPTION OR FINISHING THREAD), THEN NEAR THE NUMBER OF THIS ELEMENT WRITE (- REMOVE)

- **RED NUMBERS (1-2-3-4-5-6-7-8-9-10)** NUMBERS FOR BASE ELEMENT
- **ORANGE NUMBERS (11-12-13-14-15-16-17-18-19-20-21-22)** NUMBERS FOR FINISHING THREADS
- **YELLOW NUMBERS (23-24-25-26-27-28-29-30-31-32)** NUMBERS FOR INSERTS (INSCRIPTIONS)

PURPLE NUMBERS (33-34-35-36-37-38-39-40-41-42) NUMBERS FOR TRIM INSERTS (INSCRIPTIONS), IF THE INSERTS ARE TRIM WITH A COLOR DIFFERENT FROM THE BASE MATERIAL, YOU GET THE GLOW EFFECT! EXAMPLE ON PICTURE №3 (BELOW IN THE LIST)

ALSO YOU CAN CHOOSE THE NUMBER OF FINISHING STITCHES. FINISHING SEAM CAN BE: SINGLE, DOUBLE OR TRIPLE. EXAMPLE ON PICTURE №4 (BELOW IN THE LIST)

ANY QUESTIONS YOU CAN ASK US IN EBAY OR ON OUR E-MAIL (TRADE.MAD.STUDIO@GMAIL.COM)

TRIM (FINISHING) INSERTS IN A DIFFERENT COLOR



PIC3

OPTIONS FOR FINISHING THREADS



Single stitch

Double stitch

Triple stitch

PIC4

EXCLUSIVE FULL

INSERTS FOR TOP OF THE FRONT SEAT COVER



(PIC.5) VARIANT 0, WITHOUT INSERTS ON THE TOP

ON PICTURES 6 AND 7 SHOW VARIANTS (1-15) INSERTS ON THE TOP (+ \$ 20 TO THE PRICE)



PIC6



PIC7

ON PICTURES 8 AND 9 SHOW VARIANTS (16-32) INSERTS ON THE TOP (+ \$ 40 TO THE PRICE).



PIC8



PIC9

EXCLUSIV

INSERTS FOR SIDES OF THE FRONT SEAT COVER



(PIC 10) VARIANT 0, WITHOUT INSERTS ON THE RIGHT SIDE.



(PIC 11) VARIANT 0, WITHOUT INSERTS ON THE LEFT SIDE.

ON PICTURES 12 AND 13 SHOW VARIANTS (1-5) INSERTS ON THE SIDES FRONT SEAT (+ 20\$ RIGHT AND + 20\$ LEFT, TO THE PRICE)



PIC 12



PIC 13



(PIC 14) ON PICTURE 14 SHOW VARIANT (6) INSERT ON THE RIGHT SIDE, FRONT SEAT (+ \$40 TO THE PRICE)



(PIC 15) ON PICTURE 15 SHOW VARIANT (6) INSERT ON THE LEFT SIDE, FRONT SEAT (+ \$40 TO THE PRICE)

INSERTS FOR FRONT-SIDE OF THE REAR SEAT COVER

(PIC 16) VARIANT 0, WITHOUT INSERTS ON THE FRONT-SIDE



(PIC 17)) VARIANT 1-6 INSERTS ON THE FRONT-SIDE (+ \$20 TO THE PRICE).



EXCLUSIVE

INSERTS FOR TOP OF THE REAR SEAT COVER (FRONT)

(PIC 18) VARIANT 0, WITHOUT INSERTS ON THE TOP (FRONT)



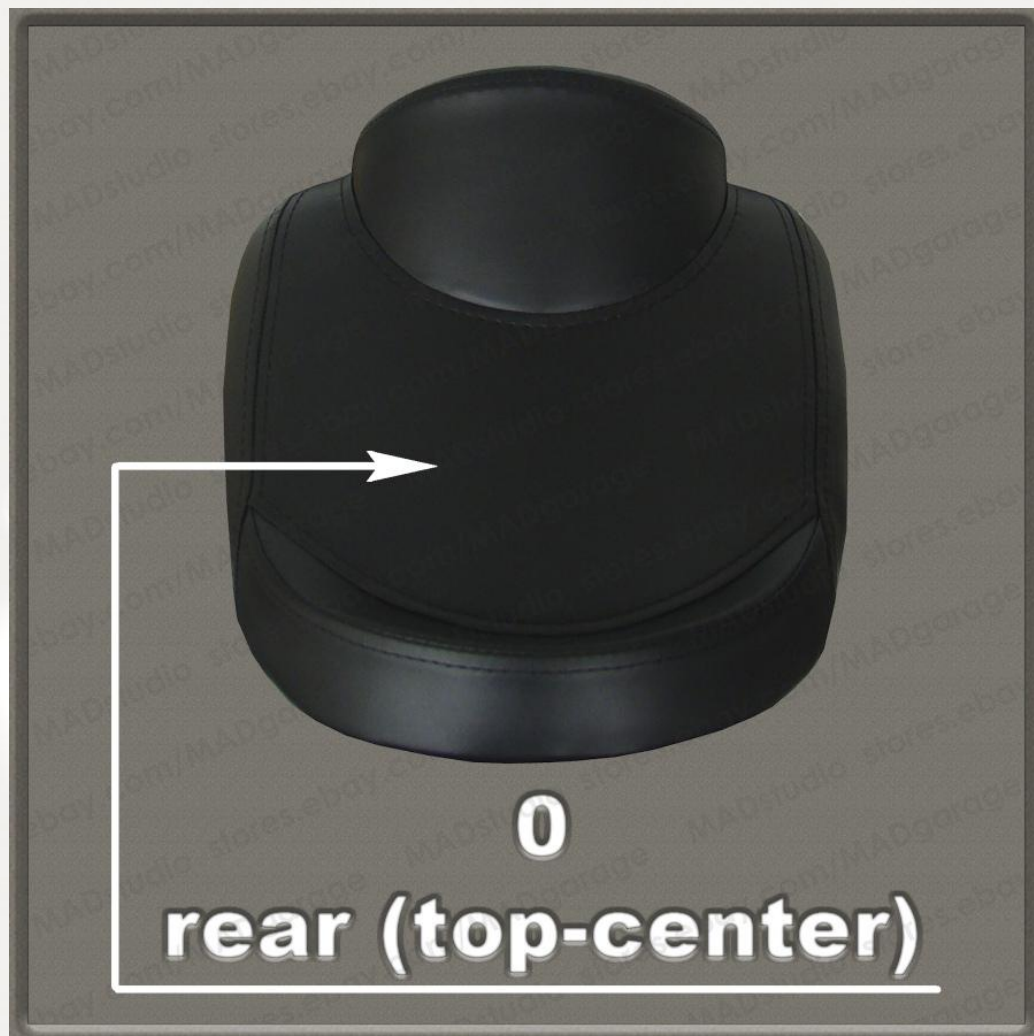
(PIC 19) VARIANT 1-8 INSERTS ON THE TOP (FRONT) (+ \$20 TO THE PRICE).



EXCLUSIV

INSERTS FOR TOP OF THE REAR SEAT COVER (CENTER)

(PIC 20) VARIANT 0, WITHOUT INSERTS ON THE TOP (CENTER)



(PIC 21) VARIANT 1-11 INSERTS ON THE TOP (CENTER) (+ \$20 TO THE PRICE).



EXCLUSIV

INSERTS FOR TOP OF THE REAR SEAT COVER (REAR)

(PIC 22) VARIANT 0, WITHOUT INSERTS ON THE TOP (REAR)

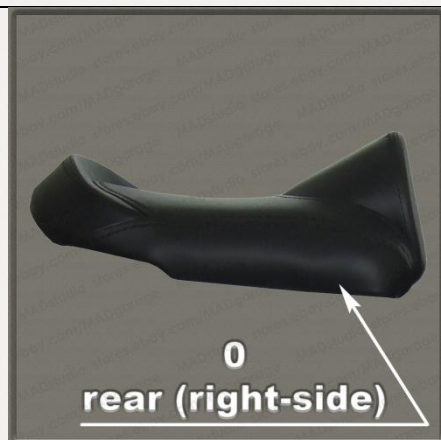


(PIC 23) VARIANT 1-6 INSERTS ON THE TOP (REAR) (+ \$20 TO THE PRICE).



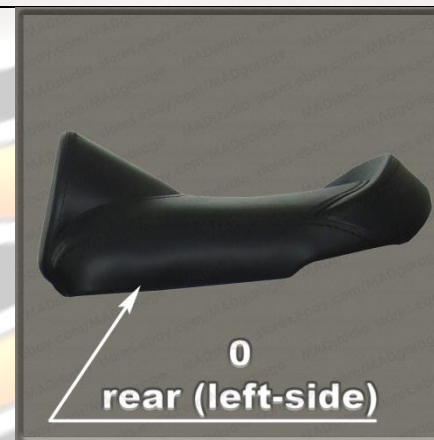
EXCLUSIV

INSERTS FOR SIDES OF THE REAR SEAT COVER



(PIC 24) VARIANT 0, WITHOUT INSERTS
ON THE RIGHT SIDE.

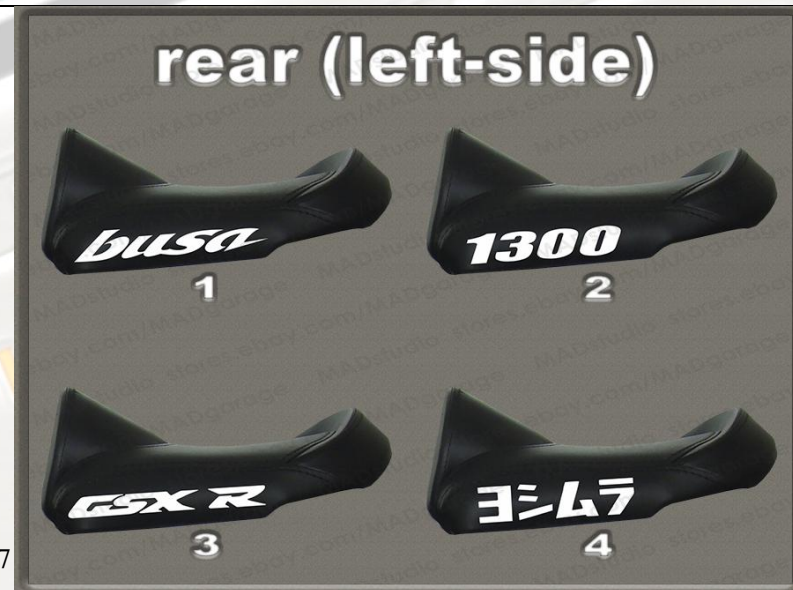
(PIC 25) VARIANT 0, WITHOUT
INSERTS ON THE LEFT SIDE.



ON PICTURES 26 AND 27 SHOW VARIANTS (1-4) INSERTS ON THE SIDES REAR SEAT (+ 20\$ RIGHT AND + 20\$ LEFT, TO THE PRICE)



PIC 26



PIC 27

IF IN THE ABOVE VARIANTS INSERTIONS YOU HAVE NOT FOUND WHAT YOU NEED, JUST CONTACT US AND TELL US HOW YOU WANT AND WE WILL DO IT FOR YOU!

OUR E-MAIL (TRADE.MAD.STUDIO@GMAIL.COM)

AVAILABLE MATERIALS

(IMPORTANT!!! BEFORE ORDERING CHECK THE AVAILABILITY OF THE COLOR YOU NEED)

The color on the screen may vary due to your local screen settings.

THE COLORS OF THE MAIN MATERIAL.

THIS MATERIAL CAN BE USED FOR THE BASE AND FOR INSERT



PIC 28

COLORS OF THREAD FOR FINISHING STITCHING AND TRIM (FINISHING) INSERTS



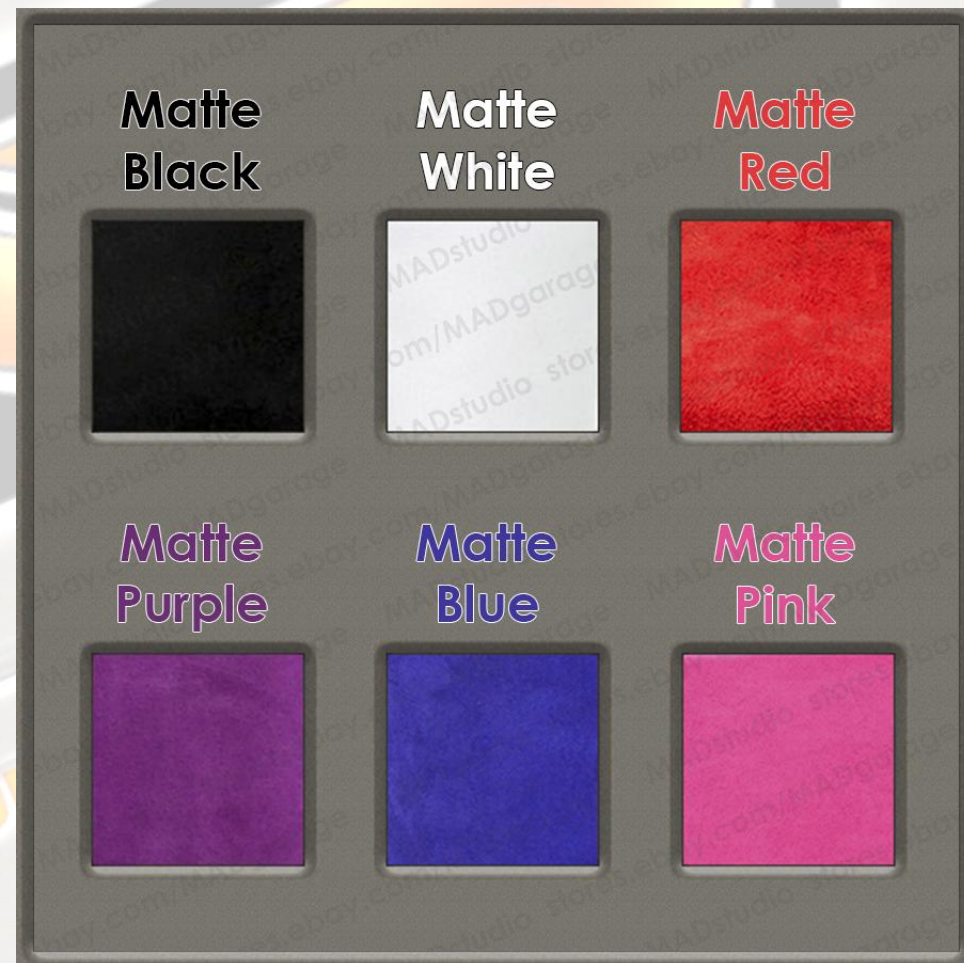
PIC 29

EXCLUSIVE LACQUERED LEATHER, CAN ONLY BE USED FOR INSERTS (**THE PRICE DOES NOT CHANGE**)



PIC 30

EXCLUSIVE SUEDE (ALCANTARA). THE MATERIAL CAN BE USED FOR THE BASE (**+ 30% TO THE PRICE**) OR FOR INSERTS (**+ 10% TO THE PRICE**). IF THE BASE AND INSERTS ARE MADE OF THIS MATERIAL (**+ 40% TO THE PRICE**)



PIC 31

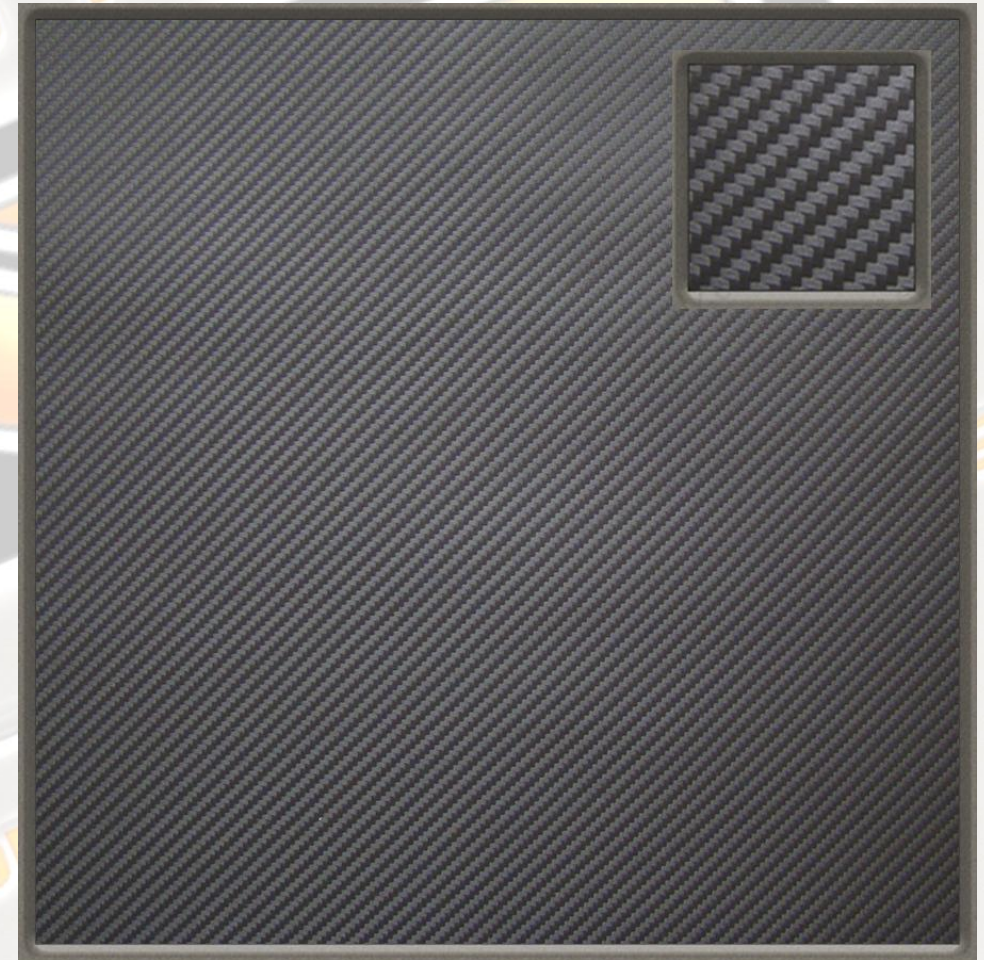
EXCLUSIVE MIRROR MATERIAL! CAN BE USED, ONLY FOR INSERTS
(+ 10% TO THE PRICE)



PIC 32

EXCLUSIVE MATERIAL IN STYLE (CARBON)!

THE MATERIAL CAN BE USED FOR THE BASE (+ 20% TO THE PRICE) OR FOR
INSERTS (+ 5% TO THE PRICE). IF THE BASE AND INSERTS ARE MADE OF THIS
MATERIAL (+ 25% TO THE PRICE)



PIC 33

IF IN THE ABOVE MATERIALS YOU DID NOT FIND WHAT YOU NEED, JUST CONTACT US AND TELL US WHAT COLOR YOU NEED. WE WILL TRY TO FIND IT FOR YOU.

OUR E-MAIL (TRADE.MAD.STUDIO@GMAIL.COM)

HERE ARE 9 OPTIONS THAT YOU SHOULD SPECIFY WHEN ORDERING

1. OPTION (**PIC 1**) - WHICH OF THE 3 OPTIONS SUPPORT, YOU CHOOSE
2. COLOR (**PIC 2**) - YOU NEED TO WRITE THE NUMBER OF THE ELEMENT AND THE COLOR THAT YOU WANT FOR IT (**PIC 28-33**)
3. INSERTS FOR TOP OF FRONT SEAT COVER (**PIC 5-9**) - YOU NEED TO WRITE THE NUMBER OF THE INSCRIPTION THAT YOU WANT
4. INSERTS FOR SIDES OF FRONT SEAT COVER (**PIC 10-15**) - YOU NEED TO WRITE THE NUMBER OF THE INSCRIPTION THAT YOU WANT
5. INSERTS FOR FRONT-SIDES OF REAR SEAT COVER (**PIC 16-17**) - YOU NEED TO WRITE THE NUMBER OF THE INSCRIPTION THAT YOU WANT
6. INSERTS FOR TOP OF REAR SEAT COVER (FRONT) (**PIC 18-19**) - YOU NEED TO WRITE THE NUMBER OF THE INSCRIPTION THAT YOU WANT
7. INSERTS FOR TOP OF REAR SEAT COVER (CENTER) (**PIC 20-21**) - YOU NEED TO WRITE THE NUMBER OF THE INSCRIPTION THAT YOU WANT
8. INSERTS FOR TOP OF REAR SEAT COVER (REAR) (**PIC 22-23**) - YOU NEED TO WRITE THE NUMBER OF THE INSCRIPTION THAT YOU WANT
9. INSERTS FOR SIDES OF REAR SEAT COVER (**PIC 24-27**) - YOU NEED TO WRITE THE NUMBER OF THE INSCRIPTION THAT YOU WANT